

VOLVO
Delivery Van

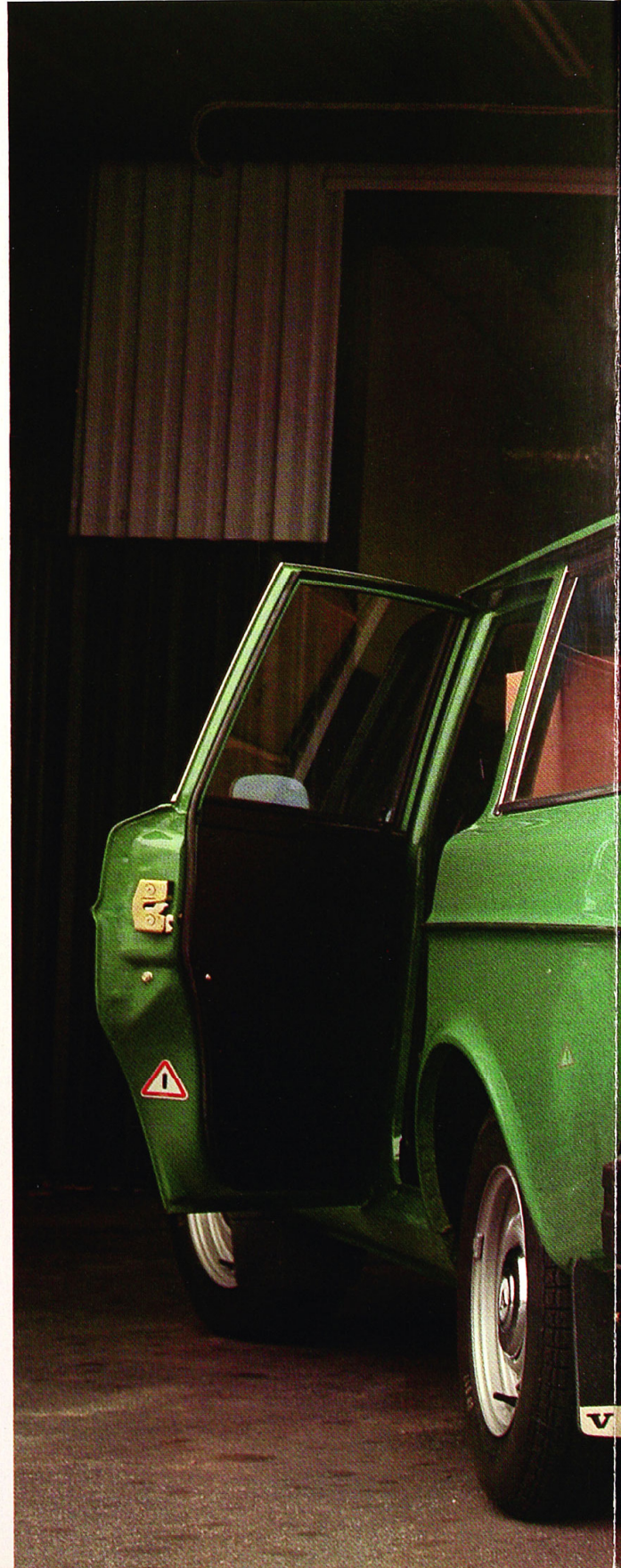


The Volvo 245 Delivery



Volvo's Delivery Van is a responsive, easily driven and practical vehicle. It also provides the same high standard of driving comfort as the Volvo 245 Station Wagon. It is extremely roomy – the load floor is 2 metres long – and it can easily swallow more than 2 cubic metres of cargo. The large rear door and the two wide-opening side cargo doors make the 245 Delivery Van easy to load and unload. The easy-to-clean steel floor is ribbed with hard-wearing, solid ash runners, making it easier on the driver and the goods. The cab is separated from the cargo area by a welded steel mesh partition.

Excellent roadholding, a well dimensioned braking system, good acceleration and first class handling make the Volvo 245 Delivery Van a really safe vehicle. If, despite all, an accident should occur, it is a comfort to know that the driver's area is itself a sturdy safety cage construction, protected by impact absorbing crumple zones front and rear.



With saloon car comfort.



Take it with ease, take it in comfort.

The Volvo 245 Delivery Van is built to take on all sorts of transport jobs – from easy and small ones to heavy and bulky ones.

Volvo have ensured the best possible working environment for the driver. The individually adjustable Volvo seat is, of course, world famous. It was developed in consultation with medical experts to provide maximum driving comfort. The easily seen instruments and the perfect positioning of the controls also play an important part in ensuring a relaxed and

comfortable driving position. The generous sized front doors have a wide opening angle to facilitate entry and exit. The well dimensioned heating and ventilating system keeps the temperature comfortable and the car well ventilated in all sorts of weather.

Packed with practical features.



Practical thinking has played an important part in the creation of Volvo's 245 Van. The springs and shock absorbers have been strengthened to cope with the extra wear and tear that a van is subjected to. Priority has been given to rationalized functionalism throughout the whole vehicle.

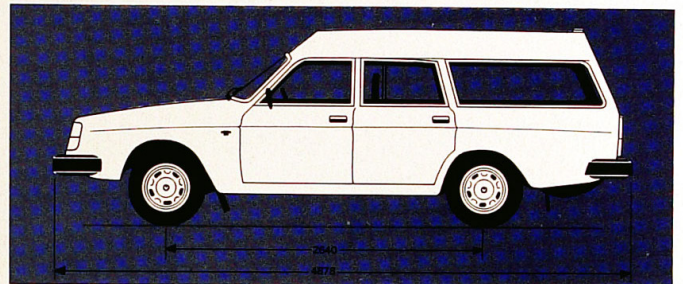
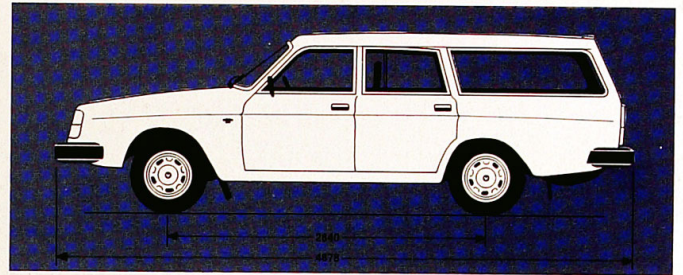
The lift-up rear door is designed to provide the best possible access when loading and unloading. With gas-filled struts enabling the door to be opened and closed with one hand. And wide wooden runners ribbed into the floor, making it much easier to slide goods into position. There is even a special hidden storage space recessed into the floor to hide valuables from prying eyes.

The Volvo Van is, of course, a 3-way loader. This not only makes it easier to load and unload the van, but also makes it more convenient to do so in narrow city streets.

Volvo's professional approach is reflected in the attention paid to function, ease of operation, comfort and safety – right down to the smallest detail. From the safety steering wheel to the easily read instrument panel with its ingenious system of warning lights. From the Volvo saloon car comfort of the driving seat, with its fatigue reducing design, to the hard-wearing practicality of the vinyl upholstery.

Technical information

Engine:	Designation B21 A Number of cylinders 4 Displacement, cm ³ 2127 Max output hp at r/m DIN 107/5500 Max output kW at r/s DIN 79/92 Max torque kpm at r/m DIN 17.3/2500 Max torque Nm at r/s DIN 170/42 Compression ratio 9.3:1 Single carburettor. In-line, watercooled with aluminium alloy cylinder head and overhead camshaft.
Cooling system:	Sealed. Capacity 9.5 litres.
Electrical system:	Battery 12V/60Ah Alternator rating 55A
Transmission:	Fully synchronized, four speed manual gearbox.
Steering gear:	Rack and pinion. Safety steering wheel and safety column of telescopic type.
Suspension:	Front: Spring strut type with stabilizer. Rear: Live, carried in rubber mounted control arms and torque rods, transverse location by track rod. Coil springs and telescopic shock absorbers.
Wheels and tyres:	Steel braced reinforced radial ply tyres, 185 SR 14 on 5.5 J - 14" rims.
Braking system:	Dual circuit, triangle-split. Each circuit operates on both front wheels and one each of the rear wheels simultaneously. Brake pipes are made of rust-resistant copper/nickel alloy. Disc brakes all round. Power assisted. Handbrake operates on rear wheels through separate drums.
Fuel tank:	Capacity 60 litres. Safety location beside rear axle.
Instrumentation:	Rheostat controlled instrument lighting. Six-figure mileometer with tripmeter. Fuel gauge and coolant temperature gauge. Warning lamps for charging, oil pressure, main beam, handbrake application and brake circuit failure. Bulb integrity sensor. Audible and visible warning for turn indicators. Combined steering and ignition lock. Centre console: switches for electrically heated tailgate window, tailgate washer/wiper, and four-way hazard warning lights. "Fasten seat belts" reminder, heating and ventilation controls. Cigarette lighter. Ashtray. Space for radio or radio/cassette.
Other standard equipment:	Combined stalk for turn indicators, main and dipped beam and headlight flasher. Combined stalk for two-speed windscreen wipers and electric windscreen washers. Halogen headlights. Automatic reversing lights. Two outer rearview mirrors. Washer and wiper for tailgate window. Inertia reel seat belts. Childproof lock in tailgate. Laminated, high-impact windscreen. Towing points front and rear. Mudflaps.



Exterior dimensions (mm):	Overall length 4878 Overall width 1707 Track: Front 1430 Rear 1360 Turning circle diameter between kerbs 9.8 m
Interior dimensions (mm):	Seat width: Shoulder height, front seat 1380 Hip height, front seat 1430 Front seat max. depth 470 Front seat max. width 560
Cargo area dimensions:	Volume, approx 2.2 m ³ Volume, concealed cavity, approx59 dm ³ Length 1880 mm Height 835 mm Tailgate opening: Width 1160 mm Height 780 mm Loading height 590 mm
Weights, approx.	Kerb weight 1317-1469 kg Gross weight 2015-2215 kg Permissible trailer weight 1500 kg
Optional features:	The Volvo 245 Delivery Van is available with or without side windows, and in a normal or a high roof version.
Warranty:	Twelve months warranty irrespective of mileage.

The factory reserves the right to make changes at any time, without notice, to prices, colours, materials, equipment, specifications and models and also to discontinue models.

VOLVO
Volvo Car Corporation
Special Vehicles
S-405 08 Göteborg Sweden.