

VOLVO

ACCESSORIES
ALL MODELS

OVATION

ACCESSORIES
ALL MODELS

1. CR 2170 AM/FM Stereo Cassette. This stereo cassette unit offers a superb combination of features and performance that makes it the best selling Volvo audio unit. Designed and engineered for the specific acoustics of your Volvo, the CR 2170 offers Dolby® noise reduction, 4 x 8 watt power output, metal tape capability, a 4 way fader/balance control, high sensitivity for FM reception range, gear driven tape mechanism together with advanced electronic state of the art audio reproduction.

2. SR 2120 AM/FM Stereo Multiplex. For the Volvo owner who desires a stereo multiplex radio, the SR 2120 has been designed and engineered to provide the ideal choice. Distinctive features include multiplex stereo decoder for selective stereo reception, automatic frequency control, bass/treble tone control, stereo indicator, speaker balance control and mono/stereo selector. With an electronic suppression device to eliminate temporary interference, this fine receiver meets the needs of the most discriminating listeners.

3. TD-3110 AM/FM Stereo Cassette/Tuner Deck. The TD-3110 is a high fidelity component type cassette tuner/deck with separate high-power amplifier designed to deliver authentic realism to your Volvo's listening environment. It features an 80 watt, high output, low distortion amplifier with built-in noise filtering circuitry. Digital quartz frequency synthesized phase lock loop tuning. Five preset buttons hold a total of ten stations for instant recall. Features also include: seek and scan tuning modes; separate bass and treble controls; built-in 4 way fader balance control; auto mono/stereo switching; Dolby "B" noise reduction; auto reverse tape mechanism; metal tape equalization switch and more.

4. R 2130 AM/FM Radio. Developed to provide an excellent standard monaural radio. Features push button channel selection, automatic frequency control and built-in noise suppression (to obviate intermittent disturbances) together with bass/treble tone control.



1



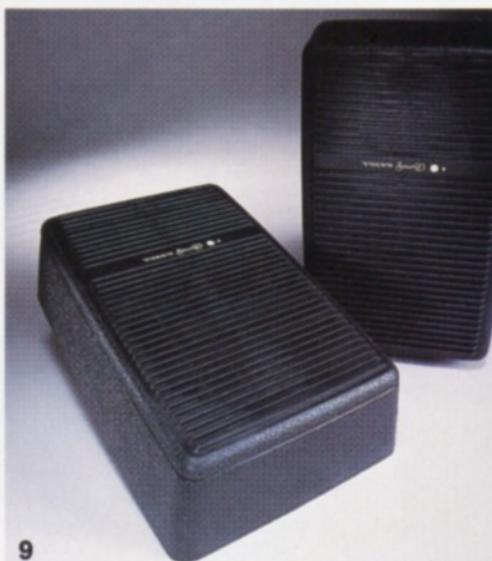
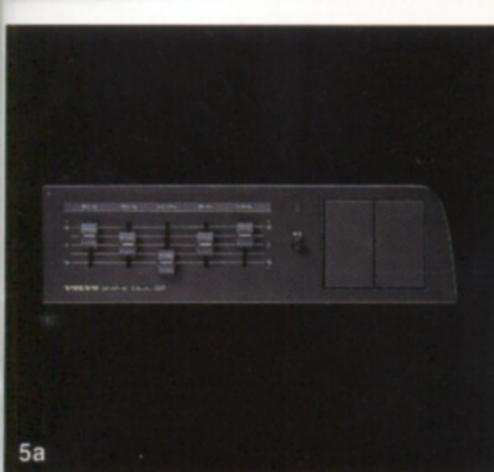
2



3



4



5. Graphic Equalizer. "Shape" the sound of your audio system. The Volvo Graphic Equalizer allows you to adjust audio output for specific acoustical taste. **Upper Dash Equalizer (5a)** features an on/off switch and power indicator light. Mounts easily in the dashboard parcel shelf when optional gauges are not installed. **Lower Dash EQ-2110 (5b)** adds latitude by use of a sound effector to help give your ear the feeling of being in a larger listening room. It also features tape storage slots for two tapes.

6. Power Booster. Provides distortion-free sound at any volume. High power booster increases the audio power of your car stereo. 40 watts (20 per channel) of distortion free sound in a compact package.

7. 20 Watt Rear Wagon Speakers. Mounts flush in color-coordinated rear side panels of Volvo station wagons. Black open-mesh grilles similar to those installed on 20 Watt Front Door Speakers.

8. Antennas. Available in a wide range to suit your particular preference. **AM/FM Power Antenna (a)** automatically retracts and extends when radio or ignition is turned on or off. **Retractable Black Fender Mount Antenna (b)** is manually retractable for sedans to provide maximum reception and security. Key provided. **Black A-Post Antenna (c)** is our most popular yet unobtrusive AM/FM antenna. Utilizes front A-Post for excellent stereo reception. Combination CB AM/FM Power Antenna is also available.

9. Deluxe Stereo 20 Watt Rear Box Speaker. Self contained 2-way speaker system. Designed for surface mounting on the rear shelf in sedan models. Rugged black ABS cabinet contains a matched 4 1/2" woofer keyed with a separate high efficiency midrange. This system provides maximum stereo separation and smooth response.

10. 20 Watt Coaxial Rear Flush Mount Speakers. A 5 1/4" woofer is complemented by a coaxially mounted matched tweeter for crisp highs and well defined bass response. Easy surface mounting on sedan hat shelf. Features an attractive black open-mesh grille.

11. 20 Watt Front Door Speakers. High compliance foam surrounding the speaker cone makes production of low distortion bass possible. An aluminum dome helps disperse high frequencies evenly. (Silver-accent, black open-mesh grilles are available to replace standard color coordinated grilles.) 10 Watt speaker kit also available.

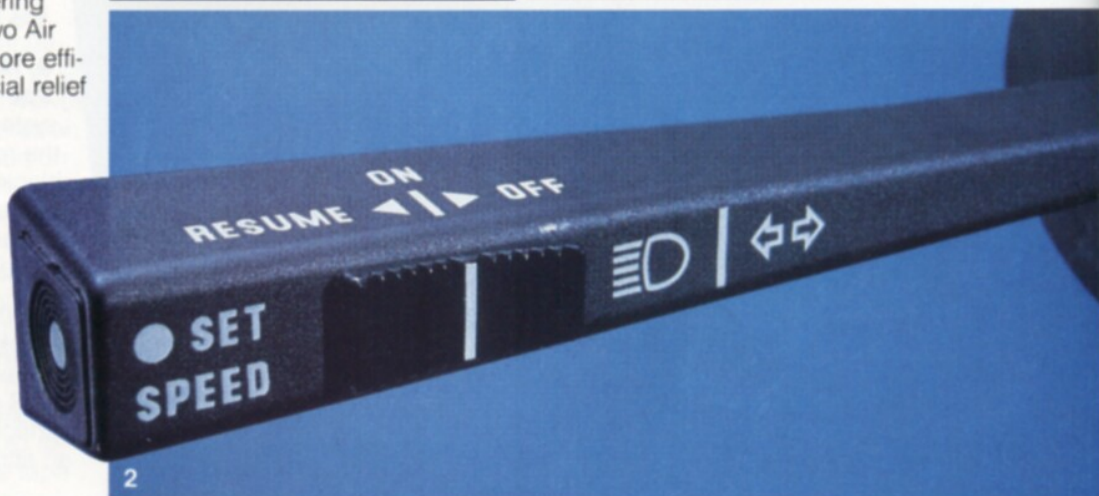
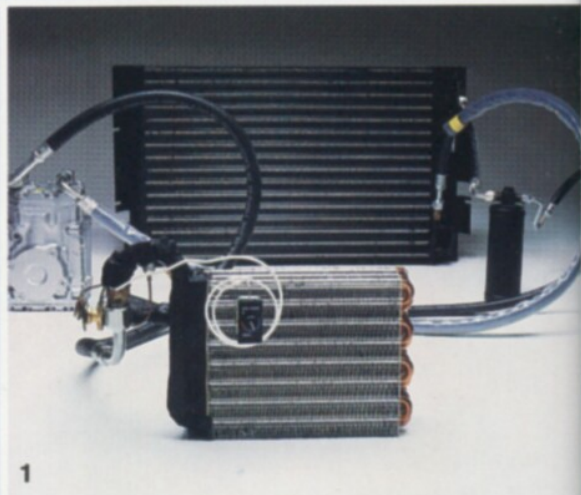
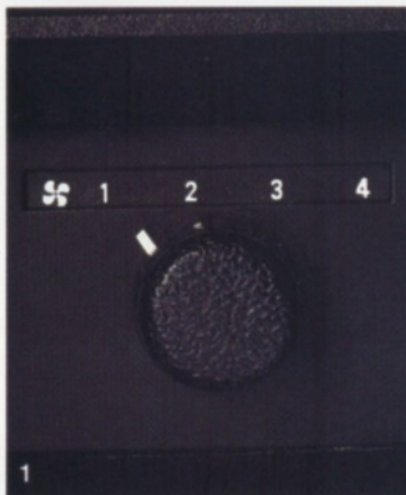
Cassette Deck Cleaning Kit (not shown). This kit cleans the tape head, capstans, and nonaccessible areas effectively with soft cotton tapes which will not damage the tape head.

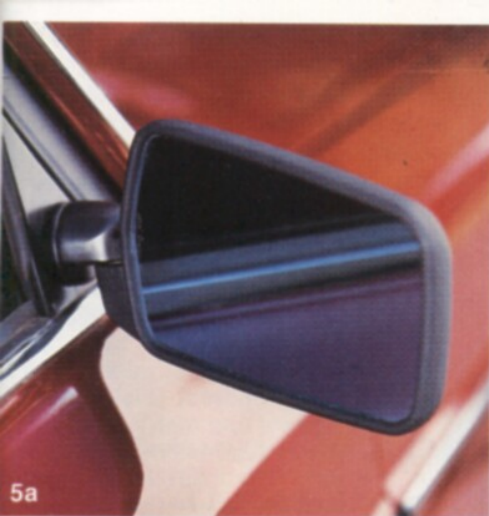
1. Volvo Air Conditioning. Driving comfort all year round. Volvo Air Conditioning circulates cool, dehumidified air throughout your car by means of 10 strategically located outlets, to refresh and relax you and your passengers on the hottest summer days. But Volvo's fully integrated air conditioning system does more. It works in tandem with your Volvo's ventilation and heating systems. So in winter or on damp spring mornings, it can help clear your Volvo's windows of visibility-reducing condensation quickly and easily.

2. Cruise Control. A fully-integrated system for easy, reliable operation. Volvo Cruise Control is designed for simple operation. And because it's fully integrated with your Volvo's acceleration and braking systems, you stay in complete control at all times. All controls are built into the turn indicator/high beam wand. Accelerate to any desired speed above 30 mph and press the Set Speed switch. The Electronic Cruise Control takes over, permitting you to take your foot off the accelerator pedal and to devote your attention to the road ahead.

3. Rear Window Shades. These elegant, roll-out shades shield the interior of your Volvo from heat and sun damage without hampering visibility. They help your Volvo Air Conditioner cool your car more efficiently, while providing special relief from the sun for rear seat passengers.

4. Remote Trunk Lid Lock. Conveniently located in your Volvo's glove compartment, this push-button release lets you unlock the trunk without having to leave your car. Standard on 240 Turbo and 240 GL.





5. Exterior Rear View Mirrors.

a. Manual Remote Right Side Mirror.

Expand your rear view with this Volvo door mirror. Provides additional rearward visibility for safer highway passing. Adjustable from inside the passenger compartment.

b. Electric Remote Side Mirror.

Adjust right door mirror with a touch of a button. Special multi-directional switches mount within easy reach of the driver. Standard equipment on GL, Turbo and 760 GLE models.

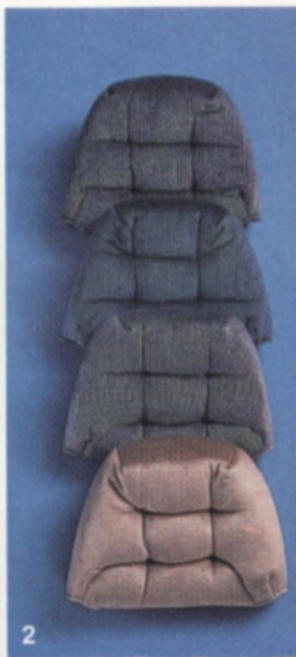
6. Adjustable Reading Lamp. For looking up an address . . . checking the map . . . or a little night reading, this "flexible-neck" Volvo lamp puts the light where you need it. Adjustable shade keeps the beam out of the driver's eyes and permits choice of wide coverage or a spot of high-intensity light. Mounts in any number of locations and snaps out of the way in its own unobtrusive holder.

7. Power Front and Rear Windows. There's luxury as well as convenience in Volvo's finger tip control power windows. Rocker switch control for front windows is mounted in the center dashboard console. Rear window controls mount in seat belt console, between the front seats. On/off switch in dash console prevents accidental opening of rear windows. Standard on GL, Turbo, 740 and 760 GLE models.





1



2

1. Senator Seat Covers. Premium quality plush velour color coordinated seat covers especially tailored for both the front and rear seats of your Volvo 4-door or wagon. Easily installed, these attractive covers offer years of protection for your original upholstery. Senator covers can be foam or dry cleaned. Available in brown, beige, blue and grey/black to complement Volvo interiors.

2. Senator Headrest Cushions. Matching front and rear headrest cushions are available separately.

3. R-Sport Seat Covers. Handsome styling with built-in padded side bolsters for increased lateral support. Tailored for both the front and rear seats. Available in blue/dark blue trim, beige/brown trim and red/black trim.

4. R-Sport Headrest Cushions. Matching front headrest cushions are available separately.

5. Sheepskin Seat Covers. Exclusive sheepskin seat covers that are the ultimate in interior luxury. Not just a slipover or casual cover, but a specially formed and tailored sheepskin for both the front and rear seats of all Volvo sedans and wagons produced since 1978 (except coupe). The luxuriously thick lamb's wool is of a natural beige color with dark brown nylon sides and back.

6. Sheepskin Headrest Cushions. Matching front and rear headrest cushions are available separately.



3



4

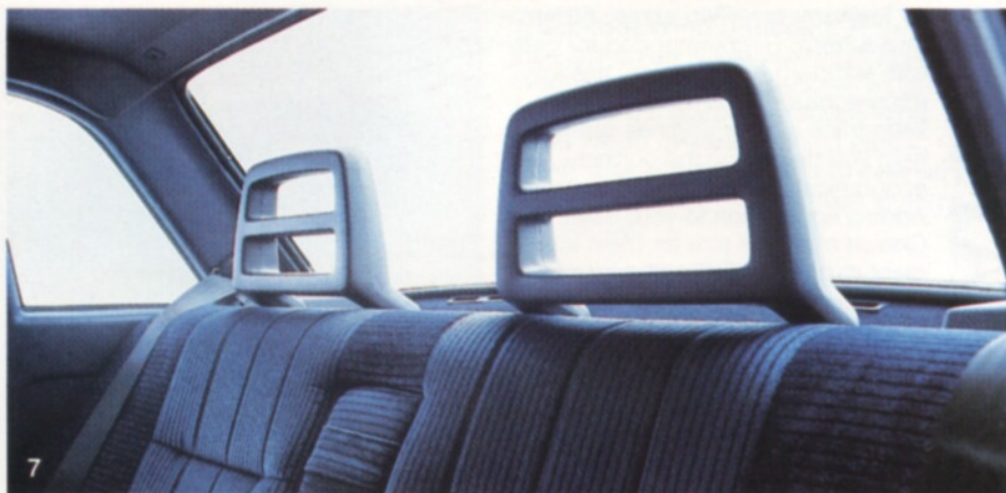


5



6

7. Rear Head Restraints. Give your rear seat passengers the same comfort and protection as those who ride in front. Easy-to-clean padded vinyl, over a reinforcing steel frame, is color coordinated to complement your Volvo's interior. Individually available in black, beige, blue, grey, brown.



8. Tricot Plush Velour Headrest Cushions. Luxuriously smooth finish. Designed for both the front and rear seat. Available individually in blue, brown and beige.

9. Cloth Headrest Cushions. Designed for easy installation and perfect fit. Available for front seat only. Individually sold in black, blue, brown and beige.

10. Tether Anchorage. Designed for accommodating child seats that require top tether strap anchorage. Volvo sedans produced since 1978 have modified rear hat shelves that are predrilled for three top tether anchorages. 740 and 760 sedans are modified to accommodate one anchorage. (Kit does not contain chrome tether mount or bolt.)

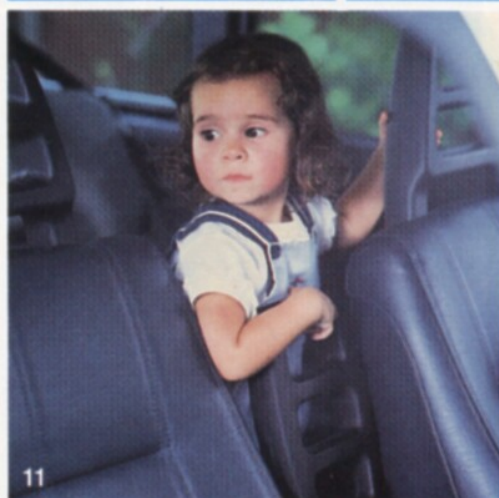
11. Child Guard. Constructed of shock-absorbing foam plastic with tubular steel reinforcements, this safety device prevents children from being thrown between the front seats in the event of an emergency stop. Child guard mounts securely on the back of the driver's seat.

12. Child Safety Cushion. You'll prize the peace of mind this accessory provides. The cushion lets your little passengers see the road ahead and ride at the proper seating height to use standard seat belts, to help prevent injury from sudden stops or surprising road hazards. The three-point seat belt system holds the cushion firmly in place. Easily removed and positioned. (See your Volvo dealer for proper fitting.)

13. Auxiliary Seat. Convert your five passenger Volvo wagon into a roomy seven-seater. Seat folds down and out of sight when not in use. Comes complete with armrests, seat belts, and entry/exit handle above tailgate. Available in beige and black.

14. Adjustable Armrest. Make driving more comfortable . . . arrive relaxed . . . with Volvo's adjustable, fold-away armrest. Push button convenience allows you to set six comfortable positions. Available in beige, blue, brown, grey and black.

Leather Headrest Cushions (not shown). Available in black and beige.



1. Tachometer—Two sizes: 80mm and 52mm. Recommended for cars with standard transmission, this fully-transistorized tachometer lets you keep track of your engine's rpms, to help you determine the correct, economical moment to shift gears. Adds a sporty look to your dash. Choice of 80mm size for main instrument cluster or 52mm size for center instrument console.

2. Oil Pressure Gauge. This gauge monitors your Volvo's oil pressure to warn against dangerous drops in pressure. It alerts you to possible low oil levels or to potential clogged filters, loose oil lines and pump or bearing problems. (Pressure ratings expressed in BARS.)

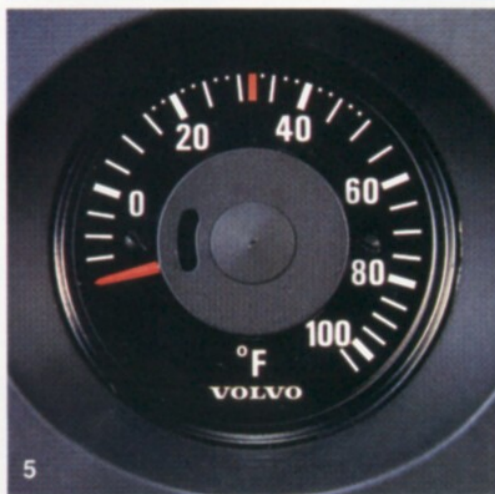
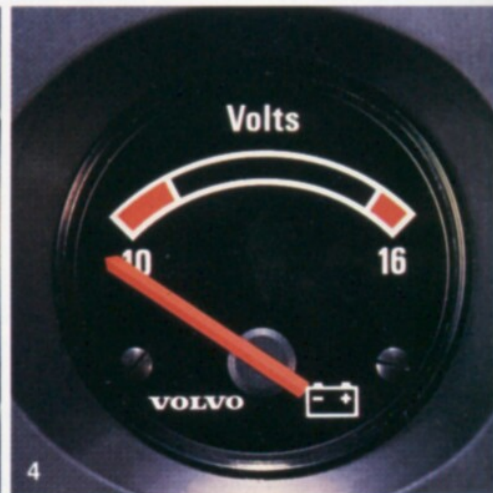
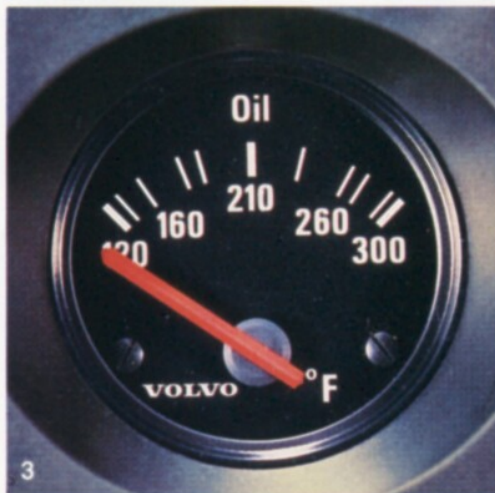
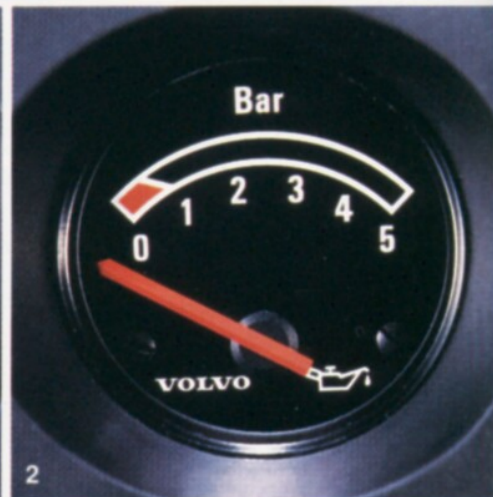
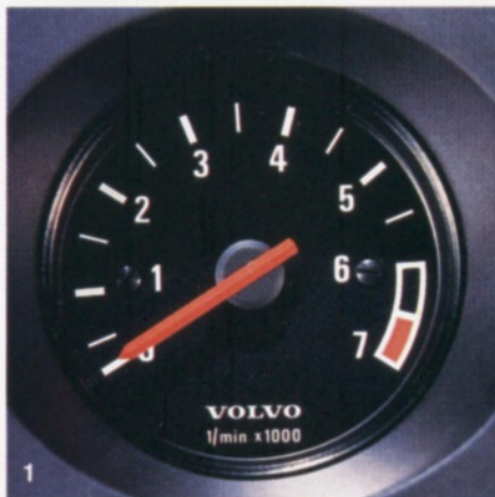
3. Oil Temperature Gauge. Recommended for Volvos used to tow or carry heavy loads or driven in high temperature climates. The instrument warns of engine overheating and possible loss of engine lubrication capability. Also available in Celsius.

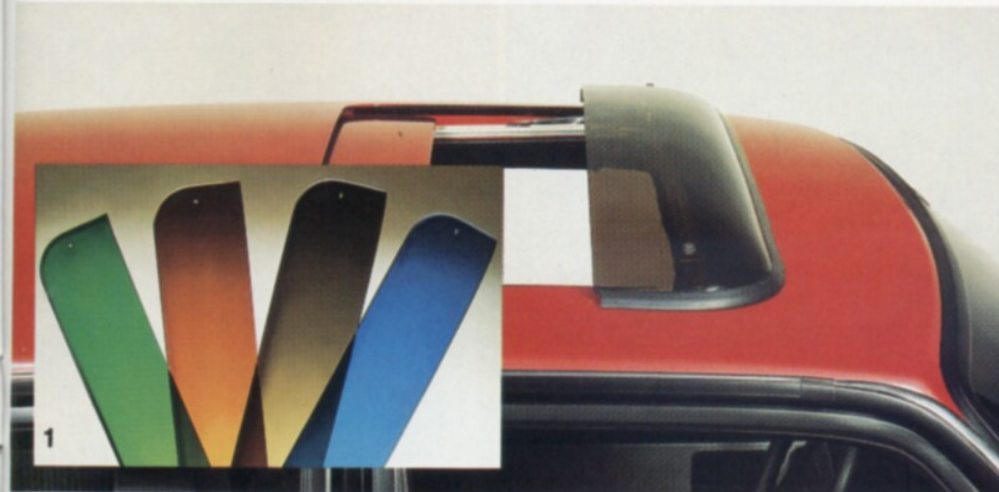
4. Voltmeter. The voltmeter monitors your Volvo's electrical system, measuring voltage at the battery while the car is in operation. Lets you spot fluctuations that can signal battery problems, excessive electrical loading or a voltage regulator malfunction. 740, 760 voltmeter is located in top right instrument panel.

5. Ambient Temperature Gauge, Analog. For cold weather driving safety, this instrument keeps you constantly aware of changes in outside air temperature at road level. It alerts you to the possibility of road icing conditions when air temperature falls below freezing. The thermocouple sensor mounts securely under the front bumper. Also available in Celsius.

6. Fuel Economy Gauge. This instrument alerts you to unnecessarily high fuel consumption.

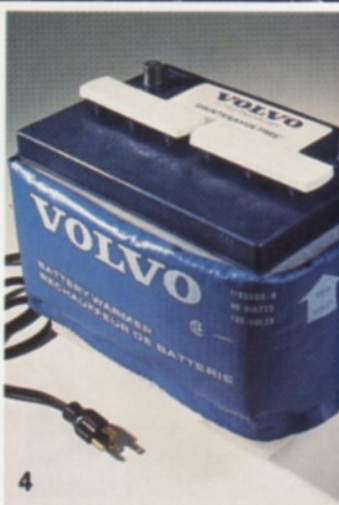
Ambient Temperature Gauge, Digital, All Models (not shown). Indicates outside temperature which is displayed through a digital readout. Locates into any 52mm gauge recess. Can be switched prior to installation into either Fahrenheit or Celsius mode. Available separately is an interior passenger compartment sensor. 740, 760 ambient temperature gauge is mounted in top left instrument panel locations and can also be switched to either Fahrenheit or Celsius.





1. Sunroof Wind Deflector. More than just an attractive finishing touch to sunroof models, these Volvo wind deflectors cut glare and reduce wind noise. Made of durable tinted plexiglass, they complement Volvo exterior colors. Available in smoke, blue, green and copper.

2. Limited Slip Differential. For extra traction in mud, snow or rain, or for starting on slick, icy roads. When one rear wheel starts to spin, it automatically transfers power to the other side to limit wheel spin and pull you through.



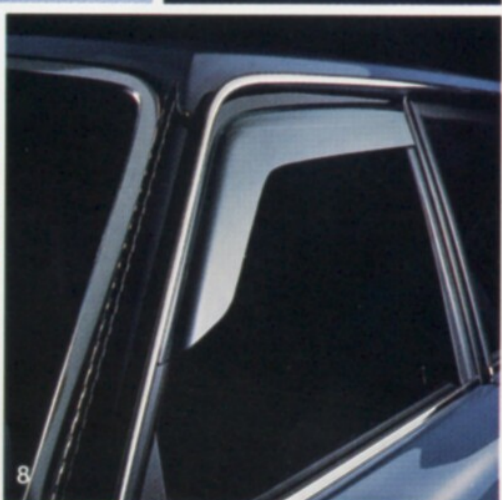
3. Engine Block Heater. Take the frustration out of cold winter starting and help prevent excessive engine wear, with this Volvo accessory. Fits into "freeze plug" on your engine block and uses normal electric house current (110V).

4. Battery Warmer. Cold weather saps your battery's starting power by up to 60% just when you need it most. The battery warmer heats your battery, using normal house current (110V), to help maintain full cranking power. Get a warm start on a cold day with this heat and acid resistant wrap-around.



5. Power Sunroof Kit. Increase the enjoyment of your sunroof. Hand crank unit is replaced with a powerful precision motor and gear assembly which provides complete operational control. Dash mounted switch. Standard on 760 series.

6. Fog Lamps. For added margin of vision without reflective glare, Volvo all-weather clear lens, halogen lamps cut through bad weather. Mounted below the bumper for protection and visibility, they add a sporty touch to your Volvo's appearance. Sold in pairs. (Note: a complete selection of halogen driving lamps is also available in Canada only.)



7. Grille Cover. Specially designed for Volvo grilles, this tough insulated plastic cover protects your engine from extreme winter weather. It shortens warm-up time and helps the engine maintain a higher working temperature. Keeps out corrosive road salt, rain and snow from engine compartment.

8. Side Window Wind Deflectors. Cuts down glare and wind noise when windows are open. Designed to look good and function efficiently. Available for both two and four door models.

1. Permanent Roof Rack. This sturdy rack increases your wagon's capabilities. Featuring stainless steel construction and corrosion-resistant alloy supports for maintenance-free good looks. The side rails and supports are blacked out to match the window treatment. Two finishes are available: stainless steel and chip-resistant black. Load limit 110 lbs (50 kg). Inside dimensions: 48" x 32" (1200mm x 800mm).

2. Load Carrying System. A complete load carrying system for all Volvo cars. Very strong, durable and versatile. Plastic coated steel tubing to protect loads from scratching and chafing. Cast aluminum gutter rail attachments with soft rubber rail protectors. Load limit 220 lbs (100 kg). Locking knobs available for extra security (see inset). For your cargo needs, the following adapter kits are available separately:

a. Load Basket. Ends can be lowered to permit loading of oversized loads. Inside dimension is 41" x 36" (1025mm x 900mm). Load limit 220 lbs (100kg).

b. Ski Adapter. Will hold up to 4 pairs of skis (non-lockable).

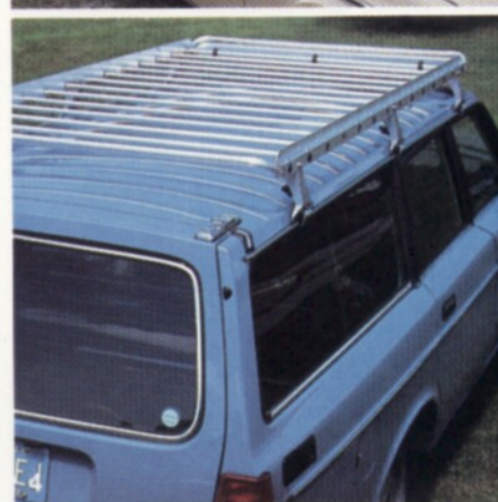
c. Bicycle Rack. For one bicycle. Load rails will hold up to 4 bicycles.

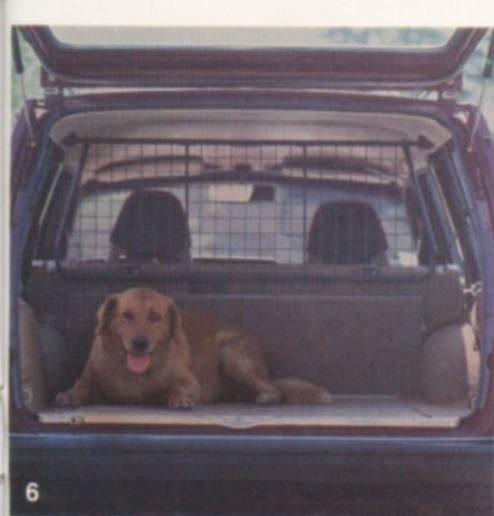
3. Removable Sedan Rack. Quick action fasteners let you secure the rack firmly to your Volvo's roof gutters in just minutes. Made of durable aluminum tubing for load carrying strength and maintenance-free good looks. Load limit 165 lbs (75 kg). The handy nylon luggage net (shown) and a vinyl luggage cover (not shown) are available separately.

4. Removable Wagon Rack. This sturdy aluminum rack expands the carrying capabilities of your Volvo wagon. Secure the rack firmly to the gutters in just minutes. Total rack weight is 24 lbs (11 kg) and is supplied with front spoiler to reduce wind noise. Load limit 220 lbs (100 kg).

5. Ski Rack. Adjustable to fit securely on your Volvo. Each support is lockable to protect your valuable equipment. Constructed of zinc-plated, polyester-coated steel for corrosion resistance. Holds six pairs of skis. Will fit over permanent roof rack.

Luggage Cover (not shown). Heavy duty vinyl coated fabric with zippered opening to protect luggage carried on the roof. Has luggage capacity of 8 cu. ft. (.23 cu. meters)





6



7



8



9



10

6. Steel Cargo Guard. Protect your rear seat passengers from loose luggage or boxes and keep pets safe and secure with this fold-down Volvo cargo guard. Guard can be quickly folded against the roof or removed when not in use.

7. Coin Console. This handy, covered tray holds coins, tokens, or any small object you want to find quickly. Conceals change from curious eyes. Available in black, beige or brown.

8. Trailer Hitch and Wiring Harness. Bolts permanently to car frame for maximum strength. Ball and draw bar assembly are removable for storage when not in use. Maximum towing capacity— 3,300 lbs (1500 kg).

Engine Oil Cooler (not shown). Should be used in conjunction with automatic transmission oil cooler when trailer towing loads exceed 2,000 lbs (920 kg).

Transmission Oil Cooler (not shown). A must for Volvo owners who do extensive heavy load towing.

9. Load Leveling Systems. Volvo load levelers are designed to keep your Volvo level for maximum road handling stability under varying load conditions.

a. Fully Automatic Load Leveling System. A unique series of valves inside specially designed shock absorbers automatically adjusts to the load you are carrying. Complete with two shock absorbers and two rear springs, to give you a sedan ride while retaining the utility of a wagon (pictured on page 18).

b. Semi-Automatic Load Leveling System. A special dash-mounted switch lets you control this system's compressor and air shocks to raise the rear of your Volvo when carrying heavy loads. Fits all models (pictured on page 18).

c. Manual Load Leveling System. Consists of special air shocks, air lines and a control gauge mounted in the trunk. Fits all models (pictured on page 18).

d. Spring Shocks. Heavy-duty rear shocks with auxiliary springs maintain ride height under heavy loads or when towing a trailer. Fits all models.

10. Ski Tunnel. A unique, practical way of transporting skis, fishing poles or other long objects inside the car without soiling the interior. Beginning with 1981 sedans, an opening between the rear seat and trunk is cleverly concealed behind the folding rear center armrest. A special tunnel of heavy vinyl has been developed for this opening that includes a plastic case and 'trap door' that allows the long bag to be rolled up and stored behind the armrest. To transport skis, simply open the trunk, unsnap the trap door to the ski tunnel, and the tunnel unfolds as the skis are pushed through.



Alloy Wheels—Precision-crafted beauty and high strength aluminum alloy are combined in these distinctive sports wheel designs. Light alloy material reduces unsprung weight to provide more responsive road handling and more comfortable riding. Open design improves air flow for faster heat dissipation and superior brake cooling. Precision machining assures wheels are true round for maximum tire life.

1. 14" Finned Alloy Wheel.

Elegant, European styling with either small cap and chrome lug nuts or large hubcaps (shown).

2. 15" Turbo Alloy Wheel. Coupled with low profile radial tires this sporty wheel can provide improved road handling.

3. 14" GT Alloy Wheel. Used with small hubcap and chrome lug nuts for a sporty appearance.

4. 14" Five Spoke Alloy Wheel. This distinctively styled lightweight wheel weighs only 12.5 lbs. Hubcap included with rim.

5. R-Sport Leather Steering Wheel. Add a GT touch to your Volvo's interior. Covered in leather for a more comfortable grip, this 14" GT Steering Wheel improves steering response and increases driver leg room.

6. Gas Shock Absorbers. Gas pressure design utilizes single monotube construction for fast heat dissipation and superior fade free performance. Unique design provides for a comfortable ride during normal street driving, but becomes progressively firmer the more they are used.

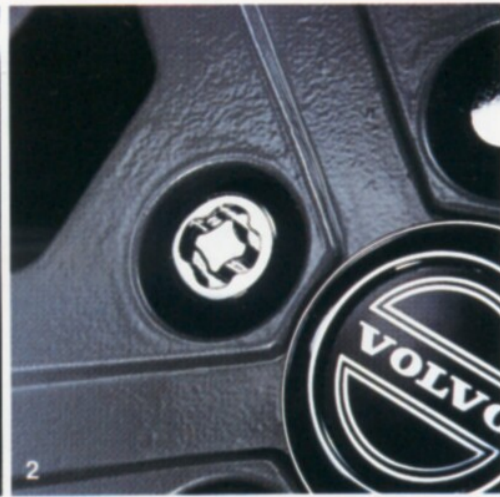
7. Rear Deck Spoiler. Improve your Volvo sedan's aerodynamics with this rear deck lid mounted spoiler. Adjustable to five positions for optimum effect. Painted flat black, it can be repainted to match your Volvo.

Leather Shift Boot Cover (not shown). The GT shift boot is genuine leather. Available in black or beige.

1. Lockable Gas Cap. At today's prices, it pays to protect your fuel investment. Gas cap is made of bright red corrosion resistant material. Comes complete with two keys.



2. Locking Wheel Nuts. Attractive chrome plated steel lug nuts protect your light alloy Volvo wheels from thieves and vandals. Special wrench socket with each package of four lug nuts lets you alone remove wheels. Replacement sockets available through a coded card enclosed with each package.



3. Anti-Theft Alarm. Safeguard your Volvo against forced entry. If opened, a special horn alarm will sound unless a key is placed in the ignition or the alarm is deactivated within 15 seconds. Protect your investment with this Volvo alarm.



4. Bumper Reflector Stripes. Bright, reflective stripes make your Volvo more visible to other drivers. Attractive, self-adhesive tapes, white for the front and red for the rear bumper, add a sporty look that also means greater safety.



5. Station Wagon Security Cover. Hide contents from view with this easy to install and use security cover. Cloth-reinforced vinyl cover retracts into a storage case when not in use. The cover is color keyed to match interior trim and can be removed for oversized loads.





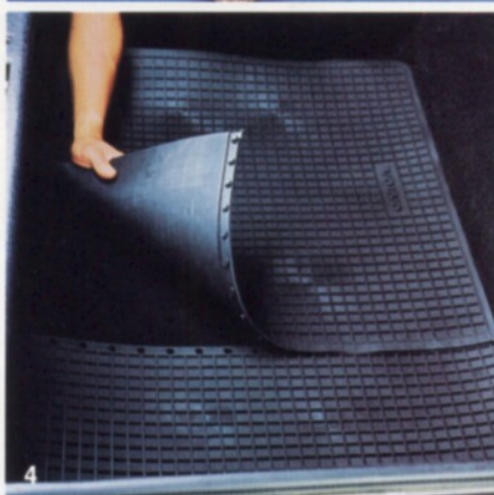
1. Plush Floor Mats. These luxurious, deep-pile floor mats are specially designed and matched to your original Volvo interior. Color fast synthetic pile mats include a woven Volvo heel pad and waterproof non-slip backing. Set of four mats, front and rear, available in brown, beige, blue, red and black.



2. Koko Mats. Koko fiber mats lend a unique combination of exciting color and protection to your Volvo. Natural fiber mats feature a woven logo heel pad and waterproof non-slip backing. Set of four mats, front and rear, available in brown, tweed, blue, beige and black.



3. Thermo-plastic Mats. Color coordinated molded thermo-plastic mats are contoured for an exact fit and maximum protection for your original carpeting. Raised border and waffle pattern traps dirt, water and snow. Rigid construction permits fast, easy removal for cleaning. Studded bottom surface prevents slipping. Set of four mats, front and rear, available in blue, brown, beige and black.



4. Trunk Mats. Protect your trunk and keep it clean with interlocking Volvo mat set. Available in black and designed to fit sedan trunks.



5. Wagon Cargo Mat. Heavy-duty vinyl mat is specifically designed to completely cover the cargo compartment of your Volvo station wagon. Protects the original carpet when carrying cargo and keeps cargo area neat when rear seat is raised. The cargo mat locks in place with velcro attachments, and is quickly removed for cleaning or storage.



6. Spray and Touch-Up Paints. Keep your Volvo's finish looking new with touch-up paints for small areas and fluorocarbon-free spray paints for larger areas. Touch-up paints have a built-in applicator brush with each bottle. Both paints available in colors to match your original finish.



7. Maintenance Items. Your Volvo deserves the best of care. Coolant, Window Wash Solvent,* Brake Fluid,* Cooling System Rust Preventative and Lubricant,* Gas Line Anti-Freeze* and Lock De-Icer* are available for your Volvo's general maintenance.

*Not available in Canada.

Service Manuals (not shown). Easy-to-follow, step-by-step maintenance information for current and past models is contained in Volvo Service Manuals.

ACCESSORIES
700 SERIES

1. Fog Lights. For added margin of vision without reflective glare, Volvo all-weather clear lens, halogen lamps cut through bad weather. Mounted below the bumper; recessed in the spoiler.

2. Trailer Hitch. Easily mounts to the pre-drilled body member of the 760 GLE. Made to provide proper towing characteristics. Maximum load 3,300 lbs/1,500 kg (Consult your owner's manual before towing a trailer.)

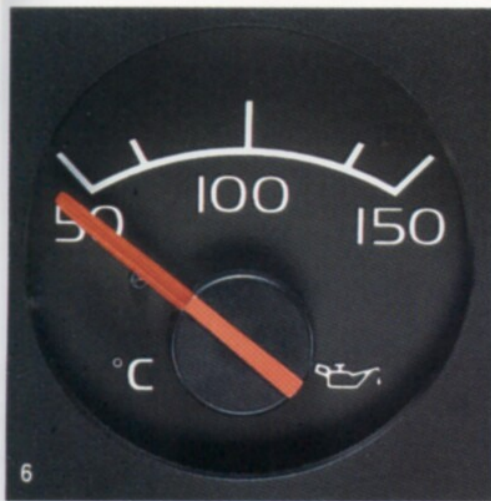
3. Ski Rack. Lockable to protect your valuable equipment, adjustable to fit securely on your 760 GLE. Carries as many as 6 pairs of skis.

4. Cowl Intake Cover. A "cap" for the intake vent; insures proper ventilation usually hampered by snow or fallen leaves. Easily fitted without drilling or screwing. Clips neatly onto the air intake.

5. Side Window Wind Deflectors. Cuts down glare and wind noise with windows open. Designed to look good and function efficiently. Available for both front and rear doors.

Air Conditioner (740, Canada) (not shown). This air conditioner is built specifically for your Volvo. A four speed fan distributes cool, dehumidified air through the existing ductwork of your Volvo's heating and ventilating system. No leg room is lost and because it's a Volvo air conditioner, it blends perfectly with your car's interior.





6. Oil Temperature Gauge. Recommended for Volvos that are used to tow, carry heavy loads or driven in high temperature climates. The instrument warns of engine overheating and possible loss of engine lubrication capability. Available in Celsius and Fahrenheit.

7. Oil Pressure Gauge. This gauge monitors your Volvo's oil pressure to warn against dangerous drops in pressure. It alerts you to possible low oil levels or to potentially clogged, loose oil lines, oil pump or bearing problems. Pressure ratings are expressed in BARS. One BAR is equal to 14.5 psi.



8. Cruise Control. The Volvo cruise control features a totally integrated control system built into the directional/high beam lever. A simple slide switch engages the cruise control. Applying the brakes or clutch automatically disengages the mechanism. "Memory" feature permits you to resume speed after slowing down or stopping by simply moving the switch to "Resume".

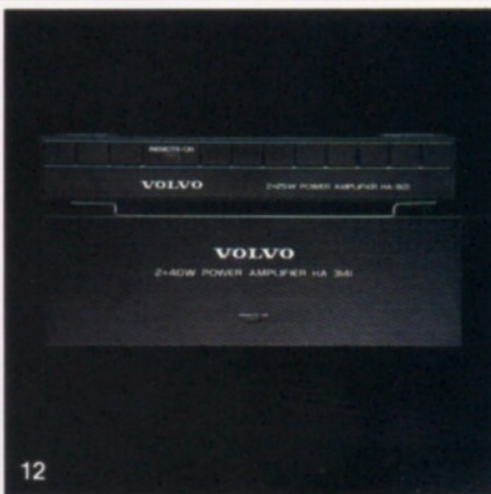
9. Dash Tray. Located conveniently on the dash, holds an assortment of small objects, color coordinated to the interior. Available in beige, black, blue, green and red.



10. Cast Aluminum 3-Way Box Speakers. (Standard on 760 Sedans). Three separate speaker elements combine to provide accuracy, high efficiency and wide frequency response. Separate equalization ($\pm 3\text{dB}$) switches are provided for mid-range and treble frequencies. Enhanced musical enjoyment is made possible with sound quality usually reserved for home speakers. NOTE: It is strongly recommended that the Volvo 2x40 watt amplifier be used to drive these speakers for best results, and speaker longevity.

11. Custom Door Speaker Grilles (740, 760). Subtly styled custom grilles replace standard color coordinated grilles for increased acoustic transparency and optimum dispersion of mid and high frequencies.

12. High Power, Low Distortion Amplifiers. These clean sounding amps can be mixed or matched in pairs to improve music reproduction dynamics even at lower power settings. They mount out of sight, under the instrument panel. The 2x25 watt amplifier comes standard in the front of the 760. The 2x40 watt amplifier comes standard in the rear of the 760.



Black Fiberglass Rod Antenna (740, 760) (not shown). Fixed, non-retractable, fiberglass rod antenna can be used to replace standard power antenna to add a sporty European flair. Especially suited for cold-climate areas where ice formation may interfere with the operation of a power antenna.

Power Antenna Switch and Harness (Standard on 760) (not shown). This switch permits the standard power antenna to be retracted while the tape deck is in operation.

1. Child Booster Seat. This cushion puts your child at the proper height to use the standard seat belts. Another advantage with the Child Booster Seat is that the child can look out the car window. (See your Volvo dealer for proper fitting.)

2. Child Guard. Helps prevent small children from being thrown between the front seats by heavy braking.

3. Load Carrying System. Versatility is the key. Start with the basic carrier bars and add on a rack or bicycle carrier. Sturdy lightweight construction will hold up to 220 lbs (100 kg) of evenly distributed cargo. Locking knobs also available (see inset). See page 10 for additional load carrying accessories.

4. Automatic Load Leveling System. A unique series of valves inside specially designed shock absorbers automatically adjusts to the load you are carrying. Complete with two shock absorbers and two rear springs to give you a sedan ride while carrying heavy loads.

5. Semi-Automatic Load Leveling System. Special air shocks, electrically operated compressor and dash control with built-in gauge. Elevates rear of car with a touch of a button to compensate for heavier loads. Kit contains: 2 special air shocks, large capacity air compressor, air lines and fittings, and dash control.

6. Manual Load Leveling System. Features two special air shocks, air lines, gauge, and fittings. Leveler system is regulated in same manner as a tire. Air filler valve installed inside trunk for easy access.

7. Rear Mud Flaps. Thick vinyl black flaps with a distinctive white Volvo logo protect rear fenders from mud and stone chip damage.



1



2



3



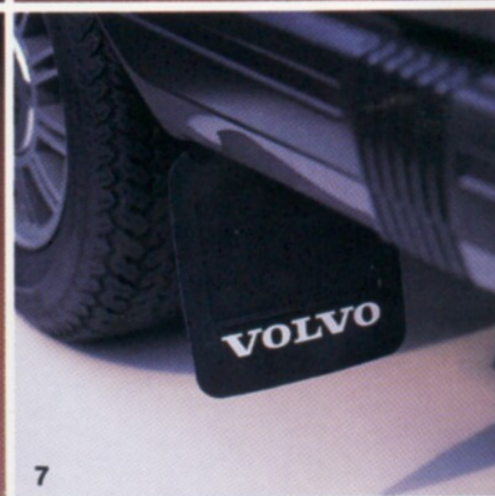
4



5



6



7



8

8. Custom Carpet Mats. Remarkably plush mats featuring hand-set tightly woven 760 GLE logo heel pad and waterproof non-slip backing. Available in beige, black, blue, green and red.



9

9. Rear Head Restraints (Standard on 760). Give your rear seat passengers the same comfort and protection as those who ride in front. Requires matching interior cover, available separately.

10. Grille Cover. For cold weather use, the grille cover raises the running temperature of the engine and helps to prevent snow, salt and moisture from entering the engine compartment.

11. Sheepskin Seat Covers. Luxuriously thick lamb's wool for the ultimate in interior comfort. Natural beige color with dark brown nylon sides and back. Matching sheepskin headrest cushions are available separately.

12. Trunk Mat. Protect your trunk and keep it clean with interlocking Volvo mat set. Available in black and designed to fit the GLE trunk.

13. Color-Coordinated All-Weather Floor Trays. Contoured for an exact fit and maximum protection of your original carpeting. Available in beige, black, blue, green and red.

Sunroof Wind Deflector (not shown; see page 9). Sculpted, smoke-colored deflector is designed to cut glare and wind noise.



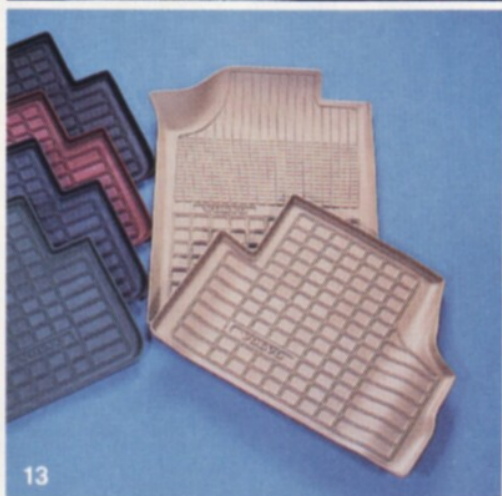
10



11



12



13

Description	Model	Year	P/N	Description	Model	Year	P/N
Air Conditioning				Trunk Mat	All Sedans	1975-1985	1128444-5
Base Kit (US)	B21,B23	1976-1984	1188564-7	Wagon Cargo Mat	All Wagons	1975-1985	283539-5
Base Kit (Canada)	B230	1985	1333993-2	Maintenance Items			
Base Kit (Canada)	B21,B23E	1976-1984	1129161-4	DOT 4 Brake Fluid			
Base Kit (Canada)	B23F	1976-1984	1188564-7	(US only)	All Models		284051-0
Installation Kit-Power	B21,B23	1976-1984	1129100-2	Coolant (Type C)	All Models		1333755-5
Steering	B230	1985	1333995-7	Cooling System Rust			
Idle Compensation Kit				Inhibitor (US only)	All Models		284033-8
(Canada)	B23E, FT	1981-1984	1129166-3	Gas Line Anti-Freeze			
(Canada)	B21A	1983-1984	1188851-8	(US only)	All Models		284032-0
(Canada)	B21A	1976-1982	1129166-3	Liquid Polish	All Models		1128865-1
(U.S.)	B21F	1976-1981	1188272-7	Lock De-Icer (US only)	All Models		284037-9
Base Kit	D24	1980-1985	1333928-8	Windshield Washer			
Installation Kit	D24	1980-1985	1129098-8	Solvent & Anti-Freeze	All Models		284031-2
				(US only)			
Audio Systems and Components				Paints		Code	
Cassettes	All Models	1976-1985		Alloy Wheel Spray-Grey			1128736-4
CR2170 AM/FM				Diplomatic Black-Touch Up			
Stereo Cassette			1129900-5	Brush		019	283476-0
TD3110 Cassette/				Spray Can		019	277500-5
Tuner Deck		1981-1985	1343012-9	Cascade White-Touch Up			
Tape Head Cleaner Kit				Brush		042	283478-6
(For All Cassettes)			1129476-6	Spray Can		042	3681800-3
Stereo	All Models	1976-1985		Royal Blue-Touch Up			
SR2120 AM/FM Stereo			1129910-4	Brush		096	283490-1
Monaural	All Models	1976-1985		Spray Can		096	281070-3
R2130 AM/FM			1129911-2	Carlsbad Yellow-Touch Up			
Power Amplifiers/Boosters				Brush		128	1128344-7
40 Watt (2 x 20) Booster	All Models	1981-1985	1129463-4	Spray Can		128	1128339-7
Graphic Equalizer	All Models	1981-1985	1129458-4	Cherokee Red-Touch Up			
Excl. Turbo and Cars with 3 Accessory Gauges in Upper Dash Location.				Brush		129	1128625-9
Lower Dash EQ-2110	All Models	1981-1985	1129916-1	Spray Can		129	3681830-0
Fader Control	All Models	1976-1985	1129461-8	Mystic Silver Met.-Touch Up			
Front Speakers				Brush		130	1128622-6
20 Watt Door	All Models			Spray Can		130	3681829-2
With Grilles (Pr)	Ex Coupe	1976-1985	1129596-1	Glacier Blue Met.-Touch Up			
20 Watt Door				Brush		134	1128771-1
W/O Grilles (Pr)	All Models	1976-1985	1129529-2	Spray Can		134	1129687-8
10 Watt Door				Coronado Gold Met.-Touch Up			
W/O Grilles (Pr)	All Models	1982-1985	1129599-5	Brush		135	1128774-5
Rear Speakers				Spray Can		135	1128772-9
20 Watt 2-Way Box (Each)	All Sedans	1976-1985	283195-6	Kingsmere Green Met.-Touch Up			
20 Watt Flush Coaxial				Brush		136	1128777-8
with Grille (Ea.)	All Sedans	1976-1985	1129598-7	Spray Can		136	1128775-2
20 Watt Wagon With				Artesia Beige-Touch Up			
Grilles (Pair)	All Wagons	1976-1985		Brush		137	1128780-2
-Black			1129481-6	Spray Can		137	1128778-6
-Blue			1129564-9	Castlewood Brown-Touch Up			
-Beige			1129565-6	Brush		138	1128783-6
-Brown			1129566-4	Spray Can		138	1128781-0
Antennas				Scotia Blue-Touch Up			
Retractable Black Fender				Brush		139	1128786-9
Mount Antenna	All Sedans	1976-1985	1128735-6	Spray Can		139	3681939-9
Black A-Post Antenna	All Models	1976-1985	1128483-3	Richelieu Red-Touch Up			
AM/FM Power Antenna	All Sedans	1976-1985	1129937-7	Brush		141	1129202-6
Combination AM/FM/CB				Spray Can		141	1129200-0
Power Antenna	All Sedans	1976-1985	1129938-5	Vernon Green-Touch Up			
CB Mast Antenna	All Models	1976-1985	1128509-5	Brush		142	1129205-9
				Spray Can		142	1129203-4
Cruise Control				Woodside Tan Met.-Touch Up			
Base Kit	All Except B21A	1980-1985	1333962-7	Brush		144	1129211-7
Installation Kits	B23F, B230F	1983-1985	1188832-8	Spray Can		144	1129209-1
(Canada)	B23E	1981-1983	1128725-7	Cameo Brown-Touch Up			
U.S.-Canada	D24	1980-1985	1188214-9	Brush		146	1129638-1
U.S.-Canada	B21FT	1981-1985	1333535-1	Spray Can		146	1129636-5
(U.S.)	B21LH	1982	1188389-9	Cyprus Green Met.-Touch Up			
U.S.-Canada	B21F	1980-1982	1128725-7	Brush		147	1129641-5
U.S.-Canada	B28F	1980-1982	1128724-0	Spray Can		147	1129639-9
				Seneca Red Met.-Touch Up			
Care and Maintenance				Brush		148	1129644-9
Floor Mat Sets	All Models	1975-1985		Spray Can		148	1129642-3
(2 Front & 2 Rear)				Black-Touch Up			
Koko-Brown Tweed			1189817-8	Brush		151	1129369-3
Black			1189818-6	Spray Can		151	1129368-5
Tan			1189819-4	Light Yellow-Touch Up			
Blue			1189820-2	Brush		152	1129371-9
Plush-Brown			1189900-2	Spray Can		152	1129370-1
Black			1189901-0	Beige-Touch Up			
Beige			1189902-8	Brush		172	1129373-5
Blue			1189903-6	Spray Can		172	1129372-7
Thermoplastic-Black			1129300-8	Red-Touch Up			
Blue			1129301-6	Brush		173	1129375-0
Beige			1129302-4	Spray Can		173	1129374-3
Brown			1129304-0	Red-Touch Up			
				Brush		175	1129377-6
				Spray Can		175	1129376-8

Description	Model	Year	P/N	Description	Model	Year	P/N
Silver/Grey-Touch Up				Alloy Wheels			
Brush		177	1129723-1	GT 14"	All Models	1975-1985	1128493-2
Spray Can		177	1129722-3	Hub Cap For 1128493-2			1272604-8
Silver/Green-Touch Up				-Slotted 14"	All Models	1975-1985	1128491-6
Brush		178	1129379-2	Hub Cap For 1128491-6			1128492-4
Spray Can		178	1129378-4	-Finned 14" (25 Spoke)	All Models	1975-1985	1128730-7
White-Touch Up				Hub Cap For 1128730-7			
Brush		189	1129712-4	Small			1129021-0
Spray Can		189	1129710-8	Large			1129031-9
Yellow-Touch Up				-Five Spoke 14"	All Models	1975-1985	283075-0
Brush		190	1333724-1	-GT 15" (5 Spoke)	All Models	1975-1985	1128867-7
Spray Can		190	1333723-3	Hub Cap For 1128867-7			1272604-8
Blue Met.-Touch Up				Chrome Wheel Nut for 1128867-7 (Each)			1272648-5
Brush		194	1129725-6	Stainless Steel Wheel Nuts	All, ex. with		
Spray Can		194	1129724-9	(Each)	15" GT Wheels		1273332-5
Black Met.-Touch Up				Lockable Wheel Nut			
Brush		197	1129397-4	Set (Ex Hub Cap 1129031) 240/260		1975-1985	1128758-8
Spray Can		197	1129730-6	Alloy Wheel Spray-Grey			1128736-4
Blue Met.-Touch Up				Engine Oil Cooler Kit	All Models		
Brush		200	1129740-5		ex. Turbo &		
Spray Can		200	N/A		Diesel	1968-1985	552909-4
Beige-Touch Up				Transmission Oil Cooler Kit	All W/Auto		
Brush		201	1333727-4		Trans	1976-1985	
Spray Can		201	1333726-6	-W/Thermostat (Cold Climate)			1188253-7
Dark Brown-Touch Up				-W/O Thermostat (Mild Climate)			1333582-3
Brush		202	1333730-8	Turbo Intercooler Kit	Turbos	1981-1984	8360900-8
Spray Can		202	1333729-0	Automatic Transmission			
Dark Blue-Touch Up				Modification Kit		1982-1984	8360901-6
Brush		204	1343361-0				
Spray Can		204	1343360-2				
Brown Met.-Touch Up				Instrumentation			
Brush		205	1333732-4	Ambient Temperature Gauges			
Spray Can		205	1333731-6	52mm (F) Analog	All Models	1981-1985	1188815-3
Red-Touch Up				52mm (C) Analog	All Models	1981-1985	1129311-5
Brush		211	1343364-4	52mm (F/C) Digital	All Models	1981-1985	1333737-3
Spray Can		211	1343363-6	Interior Sensor-Digital	All Models	1981-1985	1333739-9
Grey-Touch Up				Clock 52mm	All Models	1981-1985	1188269-3
Brush		212	1343371-9	Fuel Economy Gauge	All ex. Diesel,		
Spray Can		212	1343372-7		Turbo & shift		
Mid. Blue-Touch Up					indicator		
Brush		213	1343367-7		vehicles	1981-1985	1129312-3
Spray Can		213	1343366-9	Oil Pressure Gauge 52mm	4 Cyl.	1981-1985	1129315-6
Dark Grey-Touch Up				Oil Temperature Gauges	4 Cyl.	1981-1985	
Brush		214	1343369-3	52mm (F)			1188814-6
Spray Can		214	1343368-5	52mm (C)			1129316-4
Blue-Touch Up				Tachometers (Gas)			
Brush		215	1343429-5	80mm (Gas)	DL	1981-1985	1129310-7
Spray Can		215	1343430-3	52mm (Gas)	DL	1981-1985	1129335-4
				80mm (Diesel)	Diesel	1981-1985	1129338-8
				52mm (Diesel)	Diesel	1981-1985	1129336-2
				Voltmeter 52mm	All Models	1981-1985	1129314-9
Comfort and Convenience				Mounting Kit For			
Adjustable Map Light	All Models	1968-1985	283651-8	3 Instruments	All Models	1981-1985	1129661-3
Coin Console	All Models	1981-1985		Mounting Kit For			
Black			1129605-0	1 Instrument	All Models	1981-1985	1259730-8
Beige			1129630-8				
Brown			1129631-6				
Power Windows	164,240,DL	1975-1985		Personal Accessories			
Front			283595-7	Ash Tray			280647-9
Rear			1128388-4	Cross Pen & Pencil Set			
Rear View Mirrors	All Models	1975-1985		Gold Filled			280655-2
Electric Right			1129255-4	Chrome			280706-3
Electric Left			1129254-7	Electronic Lighter			280504-2
Manual Right	DL	1975-1985	1255685-8	Golf Umbrella			280635-4
Trim For Manual Inside			1294714-9	Key Rings			
Trim for Manual Outside			1255000-0	-1927 Volvo			280748-5
Trunk Lock Release	All Sedans	1981-1985	1129317-2	Lapel Pin			
				-Silver			280550-5
GT Sport and Handling				-Gold Plated (US only)			280549-7
Front Spoiler				Pocket Knife			280575-2
Black	DL (US)	1980-1982	1304101-7	Volvo Mug			280900-2
	DL (Canada)	1980-1985	1304101-7	Volvo Plastic Cars			
(See parts' microfiche for required installation components.)				-1927 Jakob			280542-2
Rear Deck Spoiler-				-244			280808-7
Adjustable		1979-1985	1333840-5	-245			280700-6
Steering Wheels				Volvo Tie			280522-4
Leather 14 1/2"							
(Four Spoke)	All Models	1979-1985	1333971-8	Safety and Security			
Leather 14"				Anti Theft Alarm	All Models	1975-1985	1128746-3
(Three Spoke)	All Models	1982-1985	8360877-8	Bumper Reflector			
Shift Boot Leather	Man. Trans.	1975-1985		Stripe Kit (White Front,			
Black			1264664-2	Red Rear)			
Beige			1295553-0	Canada	All Models	1974-1985	283306-9
Shock Absorber Kit	240			U.S.	All Models	1974-1982	283306-9
Gas Filled-Firm	DL, GL	1978-1985	552093-7				
Gas Filled-Extra Firm	DL, GL, GLT	1978-1985	552094-5				
Stainless Steel Trim Rings	DL, GL (Canada)	1980-1984					
(Ea.)	DL (US)	1980-1983	1272299-7				

Description	Model	Year	P/N	Description	Model	Year	P/N
Bumper Stripe Kit				Adjustable Armrests	All Models ex. Coupe	1975-1985	
Silver-Front Canada	All Models	1978-1985	1128743-0				1129148-1
-US	All Models	1978-1982	1128743-0	Brown			1129035-0
Silver-Rear Canada	All Models	1978-1985	1128741-4	Black			1129059-0
-US	All Models	1978-1982	1128741-4	Beige			1129060-8
Cargo Guard	All Wagons	1978-1985	1129091-3	Blue			
Child Cushion	All Models	1975-1985	1188344-4	Auxiliary Seat	All Wagons	1978-1985	1128800-8
Child Guard	All Models ex. Coupe	1975-1985	283667-4	Black			1128440-3
Lockable Gas Caps	140/164	1967-1973	281007-5	Beige			
	All Models	1974-1977	283954-6	Child Guard	All Models ex. Coupe	1975-1985	283667-4
	All Models	1978-1985	1129133-3	Child Booster Cushion	All Models	1975-1985	1188344-4
Lockable Wheel Nut Kit (Cannot Be Used With Hub Cap 1129031)	All Models	1975-1985	1128758-8	Headrest, Rear (Each)	All Sedans		
Tether Anchorage	240,260	1978-1985	1189891-3	Black		1975-1985	1188207-3
Trunk Lock Release	All Sedans	1981-1984	1129317-2	Light Beige		1975-1979	1129006-1
				Beige		1975-1979	1129005-3
				Beige		1980-1985	1188209-9
				Blue		1975-1985	1188208-1
				Brown		1980-1985	1188211-5
Seating				Headrest Cushions Front-Cloth (Solid Color)			
Senator Seat Covers (Complete Set-Front and Rear)	4 Dr Sedans	1978-1985		Black (Pair)	240	1975-1979	283819-1
Blue			1129611-8	Black (Each)	DL	1980-1984	1295554-8
Brown			1128878-4	Blue (Each)	DL	1980-1984	1295556-3
Beige			1128879-2	Brown (Each)	DL	1980-1984	1295557-1
Black/Grey			1128880-0	Beige (Each)	DL	1980-1984	1295558-9
	All Wagons	1978-1979		Headrest Cushions Front-Checked Cloth (Each)			
Blue			1129612-6	Blue	DL	1982-1983	1295962-3
Brown			1128881-8	Black	DL	1982-1983	1295963-1
Beige			1128882-6	Brown	DL	1982-1983	1295964-9
Black/Grey			1128883-4	Beige	DL	1982-1983	1295996-1
	All Wagons	1980-1985		Headrest Cushion Rear-Checked Cloth (Each)			
Blue			1129613-4	Blue	DL	1982-1983	1295969-8
Brown			1128884-2	Black	DL	1982-1983	1295970-6
Beige			1128885-9	Brown	DL	1982-1983	1295971-4
Black/Grey			1128886-7	Beige	DL	1982-1983	1295998-7
	4 Dr Sedans	1975-1977		Headrest Cushions Front- Velour (Each)	GL, GLT, GLE Diesel		
Beige			1129339-6	Blue		1982-1983	1295965-6
Blue			1129340-4	Brown		1982-1983	1295966-4
Senator Headrest Cushions (Front Pair)	All Models	1975-1985		Beige		1982-1983	1295967-2
Blue			1129614-2	Headrest Cushions Rear- Velour (Each)	GL, GLT, GLE Diesel		
Brown			1128890-9	Blue		1982-1983	1295972-2
Beige			1128891-7	Brown		1982-1983	1295973-0
Black/Grey			1128892-5	Beige		1982-1983	1295974-8
Senator Headrest Cushions (Rear Pair)	All Models	1975-1985		Headrest Cushions Front- Cloth (Each)	Canada		
Blue			1129615-9	Blue		1984	1313868-0
Brown			1128893-3	Brown		1984	1313869-8
Beige			1128894-1	Black		1984	1313871-4
Black/Grey			1128895-8	Beige		1984	1313872-2
R-Sport Seat Covers (Complete Set-Front and Rear)	All Sedans ex. Coupe	1978-1985		Headrest Cushions Rear- Cloth (Each)	Canada		
Blue/DK Blue Trim			1157320-1	Blue		1984	1313805-2
Beige/Brown Trim			1157321-9	Brown		1984	1313806-0
Red/Black Trim			1157322-7	Black		1984	1313808-6
R-Sport Seat Covers (Front Pair)	All Models ex. Coupe	1978-1985		Beige		1984	1313809-4
Blue/DK Blue Trim			1157310-2	Headrest Cushions Front- Tricot Plush Velour (Each)			
Beige/Brown Trim			1157311-0	Blue		1984-1985	1313980-3
Red/Black Trim			1157312-8	Brown		1984-1985	1313981-9
R-Sport Headrest Cushions (Pair)	All Models ex. Coupe	1978-1985		Beige		1984-1985	1313983-7
Blue/DK Blue Trim			1157315-1	Headrest Cushions Rear- Tricot Plush Velour (Each)			
Beige/Brown Trim			1157316-9	Blue		1984-1985	1313990-2
Red/Black Trim			1157317-7	Brown		1984-1985	1313991-0
Sheepskin Seat Covers (Front Pair)	All Models			Beige		1984-1985	1313993-6
Beige (Natural)	ex. Coupe	1978-1985	1129396-6	Headrest Cushions Front- Ribbed Plush Velour (Each)			
				Brown		1980-1985	1295175-2
Sheepskin Seat Covers (Complete Set-Front & Rear)	All Sedans	1978-1985	1129667-0	Blue		1980-1985	1242231-7
Beige (Natural)	ex. Coupe	1978-1985	1129668-8	Beige		1980-1985	1242232-5
	All Wagons			Headrest Cushions Rear- Ribbed Plush Velour (Each)			
				Brown		1980-1985	1295176-0
				Blue		1980-1985	1242234-1
				Beige		1980-1985	1242235-8
Sheepskin Headrest Cushions (Pair)		1975-1985		Headrest Cushions Front- Leather (Each)			
Front			1129669-6	Black	All ex. Coupe	1976-1985	1241937-0
Rear			1129670-4	Beige	All ex. Coupe	1976-1985	1242233-0
				Headrest Cushions Rear- Leather (Each)			
				Black	All ex. Coupe	1976-1985	1241938-8
				Beige	All ex. Coupe	1976-1985	1242236-6

Description	Model	Year	P/N
Travel, Towing and Load Carrying			
Load Leveling Systems			
Automatic (Incl. 2 rear shocks & springs)	245,DL,GL		
Semi-Automatic	GLT	1979-1985	1128791-9
Manual	All Models	1975-1985	283631-0
Rear Spring Shocks (Each)	All Models	1975-1985	283632-8
Cargo Guard	All Models	1976-1985	283088-3
Load Carrier	Wagons	1978-1985	1129091-3
	All Models	1976-1985	1188529-0
Bicycle Adapter Kit			1188533-2
Extension Rails			283277-2
Load Basket			1128686-1
Lock Kit			1188536-5
Ski Adapter			283278-0
Luggage Racks			
Permanent-Black	Wagons	1968-1985	1333961-9
Permanent-Chrome	Wagons	1968-1985	1333577-3
Removable	Wagons	1968-1985	1129660-5
Removable	All Models	1968-1985	1188728-8
Luggage Cover (Exterior)	All Models	1968-1984	1128189-6
Luggage/Security Cover (Interior)	All Wagons	1979-1985	
Black			1333671-4
Beige			1333946-0
Brown			1333945-2
Blue			1333944-5
Luggage Net	All Sedans	1968-1985	1128178-9
Roof Spoiler (Trailer Towing)	Wagons	1968-1985	1128898-2
Load Carrier to Mount			
Roof Spoiler			1129657-1
Ski Rack, Lockable	All Models	1968-1985	1188537-3
Ski Tunnel	All Sedans		
	ex. Coupe	1981-1985	1188215-6
Trailer Hitch			
(Canada)	All Models	1974-1985	1333761-3
(US)		1983-1985	1333760-5
(US)	All Models	1974-1982	1333761-3
Wiring Kit		1975-1985	283657-5
Plug Kit		1975-1985	1128873-5
Wiring Lamp Converter		1975-1985	1189882-2
Transmission Oil Cooler Kit	All Auto Trans	1976-1985	
-W/Thermostat (Cold Climate)			1188253-7
-W/O Thermostat (Mild Climate)			1333582-3
Engine Oil Cooler Kit	All Models ex. Turbo & Diesel	1968-1985	552909-4
Auxiliary Seat	Wagons	1978-1985	
Black			1128800-8
Beige			1128440-3
Weather			
Battery Warmer	All Models		284065-0
Driving Lights Halogen (Canada Only)			
Large Rectangular R	260,GL,GLE		
	GLT, Coupe		
	Diesel	1975-1985	1235051-8
Large Rectangular L	260,GL,GLE		
	GLT, Coupe		
	Diesel	1975-1985	1235050-0
(Refer to 1975-1978 Microfiche for Installation Components.)			
H4 Headlamp Kit 7"			
Single Round	Canada	1975-1980	284086-6
H1 Headlamp Kit 5¾"			
Round-Hi Beam	Canada	1975-1980	284078-3
H4 Headlamp Kit 5¾"			
Round-Hi Beam	Canada	1975-1980	284083-3
H1 Headlamp Kit 5¾"			
Rect-Hi Beam	Canada	1978-1985	284081-7
H4 Headlamp Kit 5¾"			
Rect-Hi Lo Beam	Canada	1978-1985	284079-1
Engine Block Heaters	B18,B20,B21		
	B23,B30	1962-1984	1189856-6
	B27,B28	1976-1985	284048-6
	D24	1980-1985	1189855-8
		1981-1985	1189862-4
Turbo Block Heater Cord	All Turbos		
Fog Light Kit-Clear			
Under Bumper (US)	All Models	1975-1985	284008-0
(Canada)	All Models	1975-1985	1333778-7
Bracket Kit For US			
Bumpers	Turbo	1983-1985	1189883-0
Grille Cover	244,245		
	DL4/5 Dr,		
	ex. Turbo	1978-1985	1129260-4
Grille Cover	All ex. DL		
	Turbo, GLT		
	Coupe	1975-1985	1129261-2
Intermittent Rear Wiper	245,DL Wagon	1979-1985	1128792-7

Description	Model	Year	P/N
Limited Slip Differential (w/o shift indicator light)	All Models	1970-1985	384727-4
Rear Window Shades	All Sedans	1975-1984	1128304-1
Side Window Wind Deflectors (Pair)	All 4/5 Dr	1975-1985	1128752-1
	All 2 Dr		
	ex. Coupe	1975-1984	1128755-4
Sunroof Adapter Kit-Power	Sunroof Models	1975-1985	1333687-0
Sunroof Wind Deflector	Sunroof Models	1975-1985	
Smoke			1188546-4
Blue			1128616-8
Amber			1128615-0
Green			1128617-6
Cowl Intake Cover	All Models	1976-1985	1128848-7

Description	Model	Year	P/N
Air Conditioner (Canada)	740	1985	
Base			1333889-2
Adapter Kit			1333892-6
Fan Installation Kit			1333561-7
Ambient Temperature Gauge F		1983	1188820-3
Ambient Temperature Gauge (F/C)-Digital		1984-1985	1333736-5
Interior Sensor-Digital		1984-1985	1333738-1
Ambient Temperature Gauge C		1983	1129134-1
Amplifier, 2 x 25 Watt	740	1984-1985	1343089-7
Mounting Bracket (one required)			1343134-1
Amplifier, 2 x 40 Watt	740	1984-1985	1343088-9
Amplifier Wiring			
Harness	740	1984-1985	1343087-1
(Required for any two amplifier application)			
Antenna, Black			
Fiberglass Rod	740,760	1983-1985	1308021-3
Antenna			
Power Switch	740	1984-1985	1308317-5
Power Harness	740	1984-1985	1323031-3
(Both required)			
Anti-Theft Alarm			1188365-9
Child Booster Seat			1188344-4
Child Guard			1188257-8
Cowl Intake Cover			1188252-9
Cruise Control	740	1985	
Base			1343461-8
Installation Kit	B230FT		1333629-2
Installation Kit	B230F		1367112-8
Dash Tray			
Beige			1188512-6
Black			1188511-8
Blue			1188513-4
Green			1188515-9
Red			1188514-2
Floor Mat Sets (2 Front, 2 Rear)			
Plush	760	1983-1985	
Beige			1189835-0
Black			1189839-2
Blue			1189836-8
Green			1189838-4
Red			1189837-6
Plush	740	1985	
Beige			1189840-0
Black			1189841-8
Blue			1189842-6
Green			1189843-4
Red			1189844-2
All-Weather Floor Trays (2 Front, 2 Rear)		1983-1985	
Beige			1188436-8
Black			1188433-5
Blue			1188434-3
Green			1188435-0
Red			1188437-6
Fog Light Kit	740	1985	1333638-3
Fuel Economy Gauge B28F 1983			1188341-0
Grille Cover			1188366-7
Headrest Cushions Front-Velour (Each)		1985-On	
Blue	740 GLE		1338527-3
Green	740 GLE		1338528-1
Beige	740 GLE		1338529-9
Rear-Velour (Each)*		1985-On	
Blue	740 GLE		1311370-9
Green	740 GLE		1311013-5
Beige	740 GLE		1311373-3

*Must use rear head restraint.

700 SERIES

Description	Model	Year	P/N
Headrest Cushions Front-Pinstripe (Each)		1985-On	
Blue	740 Turbo		1354614-8
Beige	740 Turbo		1354616-3
Red	740 Turbo		1354617-1
Black	740 Turbo		1354618-9
Rear-Pinstripe (Each)*		1985-On	
Blue	740 Turbo		1322620-4
Black	740 Turbo		1322621-2
Red	740 Turbo		1322622-0
Beige	740 Turbo		1322623-8
Rear Head Restraint—Uncovered (Each)	740		1188403-8
Key Rings—760 Motif			280804-6
Load Carrier			1188529-0
Extension Rails			283277-2
Ski Adapter			283278-0
Bicycle Rack			1188533-2
Lock Kit			1188536-5
Load Leveling Systems			
Automatic (Incl. 2 Rear Shocks & Springs)	740		1188367-5
Semi-Automatic	740,760		1188875-7
Manual	740,760		1188876-5
Lockable Wheel Nut Set			1188841-9
Lockable Gas Cap			1129133-3
Mud Flaps (Rear Set)			1188836-9
Oil Pressure Gauge		1984-1985	1333767-0
Oil Pressure Sensor		(See dealer for details)	
Oil Temp. Gauge (F°)		1984-1985	1333764-7
Oil Temp. Gauge (C°)		1984-1985	1333762-1
Oil Temp. Sensor		(See dealer for details)	

*Must use rear head restraint.

Some items available but not pictured.
See your dealer for additional information.

Volvo reserves the right to change prices, colors, materials, specifications, and also to discontinue accessory items without prior notification.

Description	Model	Year	P/N
Paints, Touch Up		Code	
Black	Brush	019	283476-0
	Spray Can	019	277500-5
Silver Met.	Brush	130	1128622-6
	Spray Can	130	1129686-0
Onyx Met.	Brush	151	1129369-3
	Spray Can	151	1129368-5
Redwood Met.	Brush	175	1129377-6
	Spray Can	175	1129376-8
Graphite Met.	Brush	177	1129723-1
	Spray Can	177	1129722-3
Green Met.	Brush	178	1129379-2
	Spray Can	178	1129378-4
White	Brush	189	1129712-4
	Spray Can	189	1129710-8
Blue Met.	Brush	194	1129725-6
	Spray Can	194	1129724-9
Blue Met.	Brush	200	1129740-5
	Spray Can	200	N/A
Dark Blue	Brush	204	1343361-0
	Spray Can	204	1343360-2
Brown Met.	Brush	205	1333732-4
	Spray Can	205	1333731-6
Red	Brush	211	1343364-4
	Spray Can	211	1343363-6
Grey	Brush	212	1343371-9
	Spray Can	212	1343372-7
Mid Blue	Brush	213	1343367-7
	Spray Can	213	1343366-9
Dark Grey	Brush	214	1343369-3
	Spray Can	214	1343368-5
Blue	Brush	215	1343429-5
	Spray Can	215	1343430-3
Plastic Car—760 GLE			280543-0
Rear Window Shades			1188402-0
Seat Covers			
Sheepskin Set (Front Pair)			1188427-7
Headrest Covers (Front Pair)			1188755-1
Side Window Wind Deflectors (Pair)			
Front			1188412-9
Rear			1188413-7
Ski Rack, Lockable			1188537-3
Ski Tunnel			1333514-6
Speakers, Cast Aluminum 3-Way			
Box Speakers	740,760	1983-1985	1129473-3
Speaker Grilles, Custom			
Door	740,760	1983-1985	1308033-8
Sunroof Adapter Kit—Power	740	1985	1188522-5
Sunroof Wind Deflector			1188419-4
Tether Anchorage	740,760	1983-1985	1189892-1
Trailer Hitch			1188879-9
Wiring Kit			1188229-7
Plug			1128873-5
Wiring Lamp Convertor			1189882-2
Trunk Mat			1188387-3
Volt Meter		1984-1985	1333937-9

VOLVO